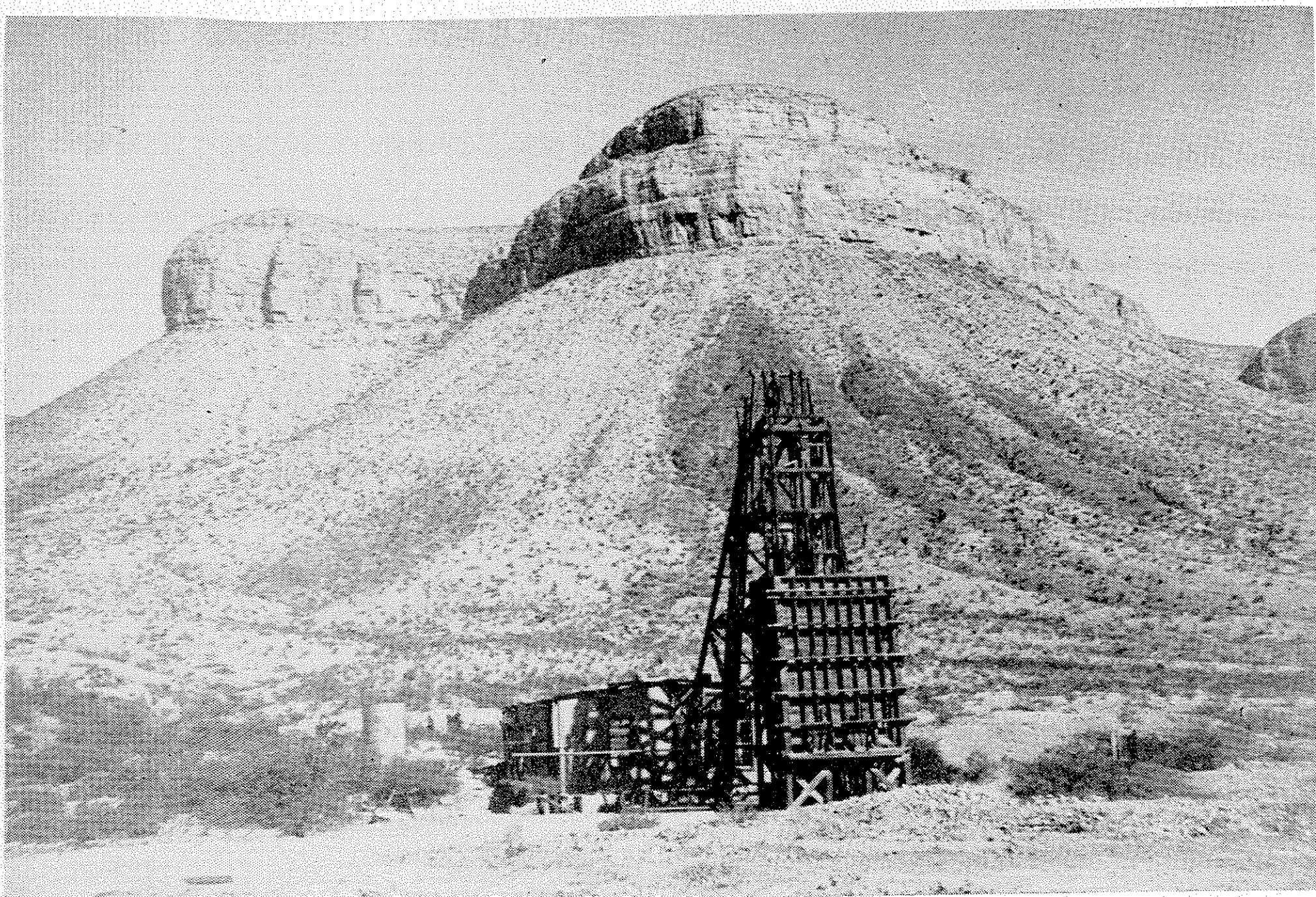


(A) The Hazel mine in 1889 (reproduced from a photograph by Rogers; Von Streeruwitz (1890), opposite p. 224).



(B) The Hazel mine in 1951, view just east of that in (A) above. Compare with (A) above and note the increase in creosote bush and decrease in grasses. Photograph taken by P. T. Flawn, 1951.